



SURVEY BOAT *Blue Dolphin*

SPECIFICATIONS

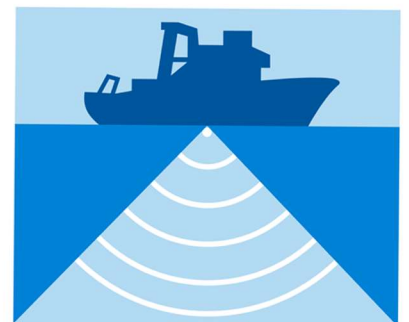
"Blue Dolphin" is a road transportable survey boat based in Cape Town, South Africa. The vessel is equipped with twin Yamaha 70HP 4-stroke outboard motors, and has a purpose-built removable multibeam sonar pole mount. 220Vac power for equipment is provided by a 3.0 KVa petrol inverter-generator. A full suite of survey, positioning and sonar equipment is fitted in order to cater for most survey project requirements. The vessel has space available for additional equipment fits and has seating for two system operators and skipper.



Length	6.7m
Motors	2x 70HP Yamaha 4-stroke
Fuel	160 litre tank
Max Speed	26 knots
Power	220Vac 3KVa generator

SA Marine Safety Authority certified for:

- 6 person
- 40nm offshore
- Day & night operation
- Full safety equipment



**UNDERWATER
SURVEYS**

Tel: 0217096000

info@underwatersurveys.com

www.underwatersurveys.com